

generator; 5hp Black Max air compressor; Delta 12" planer; Delta 10" contractor table saw; engine stand; Agri Fab 10 utility trailer; large stack of local planed black walnut lumber; 24' Werner alum. ext. ladder; loads of machinist tools; Ames 401 micrometer; grinding tools; Berger transit; David White transit; Vari volt meter; oxygen tank with 500psi; Argon tank with 900psi; workbenches; wood lathe tools; loads of power tools; Bosch hammer drill; early Otis elevator governor; 16 ton pipe bender; Rigid pipe threading outfit; cutters; large C clamps; pipe wrenches; centering indicators; pneumatic tools; aluminum and stainless stock; 3 large aluminum parking lot poles; loads of misc. Harley Davidson Shovelhead parts; small gear reduction motors; loads of electrical and plumbing parts.

**Note:** No loader available for large items, other arrangements can be made.

**Antique Furniture, Antiques.** Early carved curio hutch "Michigan Chair Co"; glass front curio; two early beveled glass windows; trunks; dining table w/ 4 chairs; sofa table; sofa; king size bed w/ metal head board; steel lockable cabinet; Nautilus Sport series T516 treadmill; 3pc 1940s dresser set; large early drafting table; drafting stool; Accu Weigh 100lb scale; butcher block workbench; Wolfs Head metal sign; Johnson Motors sign; White Parts Service sign; enameled No Smoking sign; blue jars; milk bottles; crocks; small wood barrel; Underwood typewriter; 1945 Philippines sword; The M.C. Lilley Co. Columbus sword; early Coke cooler; Longaberger baskets; Erector sets; early chemistry sets; German dishes; loads of early chemistry beakers and glass pieces; box Bausch & Lomb microscope; old wood library ladder; Griswold No3 grinder; plus misc. household.

**Terms On Chattels:** Driver's license or State ID required to register for bidder number. Cash, Check, Debit Card, Visa, or MasterCard accepted. 4% buyer's premium on all sales, 4% waived for cash or check when paid sale day. Information is believed to be accurate but not guaranteed. Multi Par auction process may be used.

**Auction By Order Of:** Mark & Sandra Yelic



**JEFF R. KIKO**  
**AUCTIONEER/REALTOR®**  
 330.206.1079  
 jeffkiko@kikocompany.com



**REALTORS  
 AUCTIONEERS  
 ADVISORS**

Information is believed to be accurate but not guaranteed.  
 KIKO Auctioneers



# ABSOLUTE AUCTION

FRIDAY, JULY 24, 2026, 10:30 AM  
REAL ESTATE SELLS AT 11:30 AM



REAL ESTATE



## NICE HOBBY FARM W/ COUNTRY SETTING

Three-Bedroom Ranch Home  
On 1.95 Acres  
42'x50' Bank Barn, Three-Car  
Detached Heated Garage,  
16'x35' Garage  
Mahoning County, Ellsworth Twp.,  
Western Reserve LSD

7305 DUCK CREEK RD.,  
BERLIN CENTER, OH 44401

[www.kikoauctions.com](http://www.kikoauctions.com) | 800.533.5456

## LIVE ONSITE AUCTION WITH ONLINE BIDDING ON REAL ESTATE

### Also Selling Live Onsite:

- 2008 Ford Ranger W/ 91K Miles
- Ferris Zero Turn
- Ford 860 Tractor
- Bridgeport
- South Bend Lathe
- Machinist Tools
- Antiques
- Furniture



Scan for auction  
details, including  
directions.

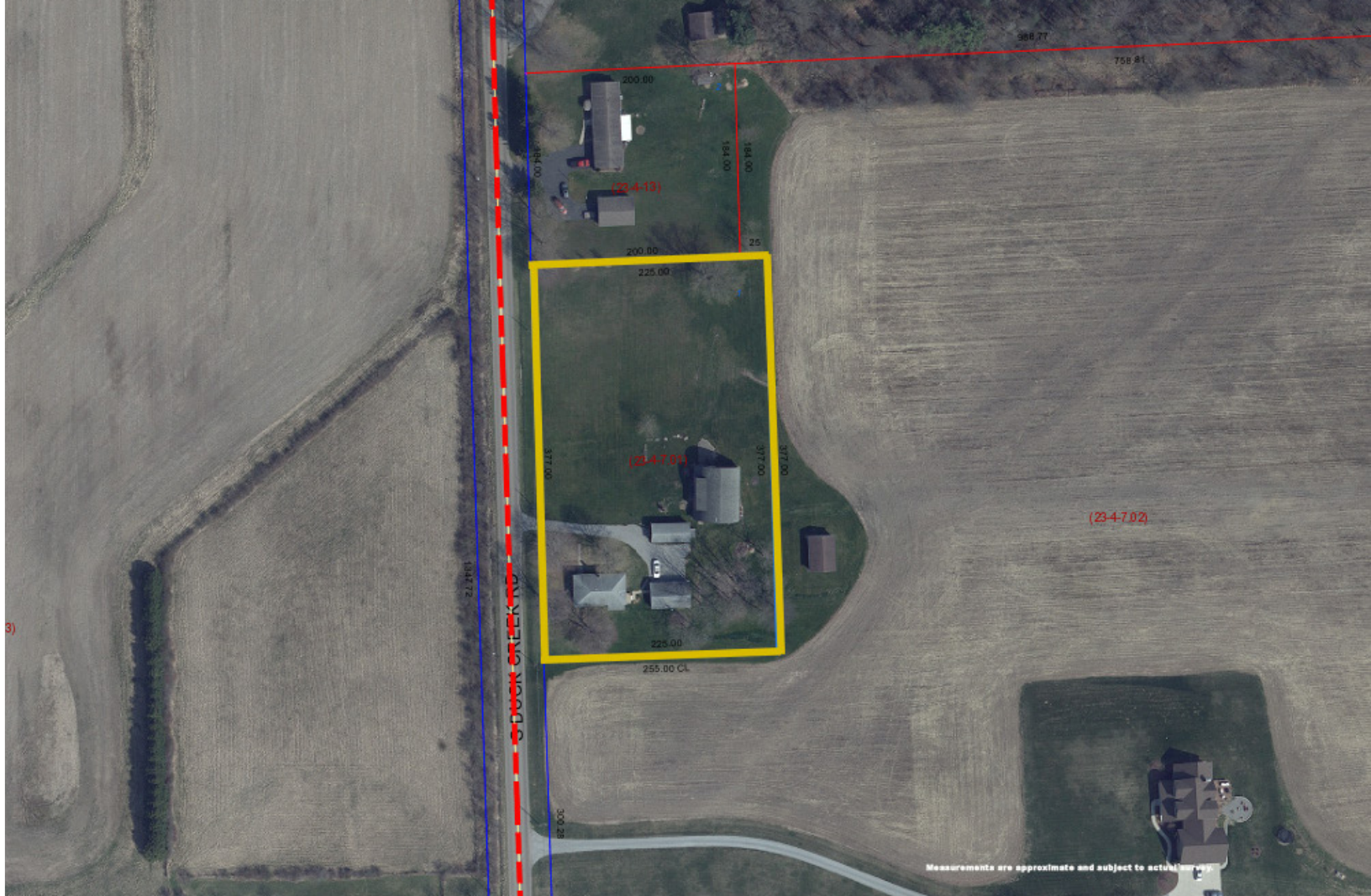
*Absolute Auction.  
All sells to the  
highest bidders.*



**Real Estate Features:** Mahoning County parcel #23-004-0-007.01-0. Beautiful hobby farm situated on a nice 1.95-acre country lot. Main level of the ranch home has nice mudroom entrance, full bath, kitchen with dining area, living room, enclosed front porch and three bedrooms. Full unfinished basement with breaker electric, reverse osmosis water treatment system, oil furnace with central air, water well and septic. The roof shingles were replaced in 2022. Very clean home ready to move in! Home was built in 1920, has 1,004 sq. ft. and real estate half year taxes are \$1,112.

The detached three-car garage is approx. 22'x34' and is well insulated with oil furnace. The two-story bank barn is 42'x50' and is ready for your livestock and 4-H projects. The last building is a 16'x35' garage with one overhead door. Loads of possibilities with this property from a car enthusiast or hobby farmer this farm will not disappoint.

**HOME WILL BE OPEN AUCTION DAY STARTING AT 9:00 AM OR CALL FOR A PRIVATE SHOWING.**



**Terms On Real Estate:** 10% down auction day, balance due at closing. A 10% buyer's premium will be added to the highest bid to establish the purchase price. Any desired inspections must be made prior to bidding. All information contained herein was derived from sources believed to be correct. Information is believed to be accurate but not guaranteed.

**CONTENTS WILL BE SOLD LIVE ONSITE.**

**Truck, Tractors, Equipment, Tools.** Super clean 2008 Ford Ranger XLT w/ 91K miles, extended cab, automatic, 6' bed, 3.0L, V6; Ford 860 tractor, gas, 6 spd., custom snow plow, 3pt, PTO; nice Ferris S700Z zero turn mower, 52" deck, 387 hrs., Kawasaki 23hp engine; Sabre John Deere 25hp riding mower; utility trailer; 3pt slip scoop; 3pt 6' back blade; Bridgeport Series 1 Mill, 3 phase, 220V, w/ 3 phase convertor; South Bend heavy 10" lathe, 1.5 HP, 220V, 1 phase, Vari speed control, DC motor, w/ accessories; Champion 80 gal upright air compressor; 5250 watt Briggs